

# CREEK GATE



**AS**  
REAL ESTATE  
STAY AHEAD, INVEST SMART

**db**  
DUBRICKS  
POSSIBILITIES ARE LIMITLESS

**DUBAI CREEK**  
HARBOUR



# DUBAI CREEK HARBOUR



01

Dubai Creek Harbour is an ultra-modern and stylish neighbourhood situated along the historic Dubai Creek.

Designed with pedestrian-friendly streets, Dubai Creek Harbour offers convenient connections between the neighbourhood centre and a viable mix of retail, business, recreation, parks, open spaces, and community facilities, all within walking distance.



# CREEK ISLAND



02

Creek Island in Dubai Creek Harbour is a one-of-a-kind waterfront destination offering residents the very best of lavish island living.

Set against the backdrop of Dubai's awe-inspiring skyline and the natural beauty of the historic creek, Creek Island is home to a world of outstanding leisure, retail, dining and recreational venues and amenities.



CENTRAL PARK



CREEK MARINA & WATERFRONT PROMENADE



CREEK MARINA YACHT CLUB



BREATH-TAKING VIEWS OF THE WATERFRONT & CENTRAL PARK



WORLD-CLASS DINING & RETAIL DESTINATIONS



VIDA CREEK HARBOUR & ADDRESS HARBOUR POINT



# CREEK GATE LIVE THE HIGH LIFE



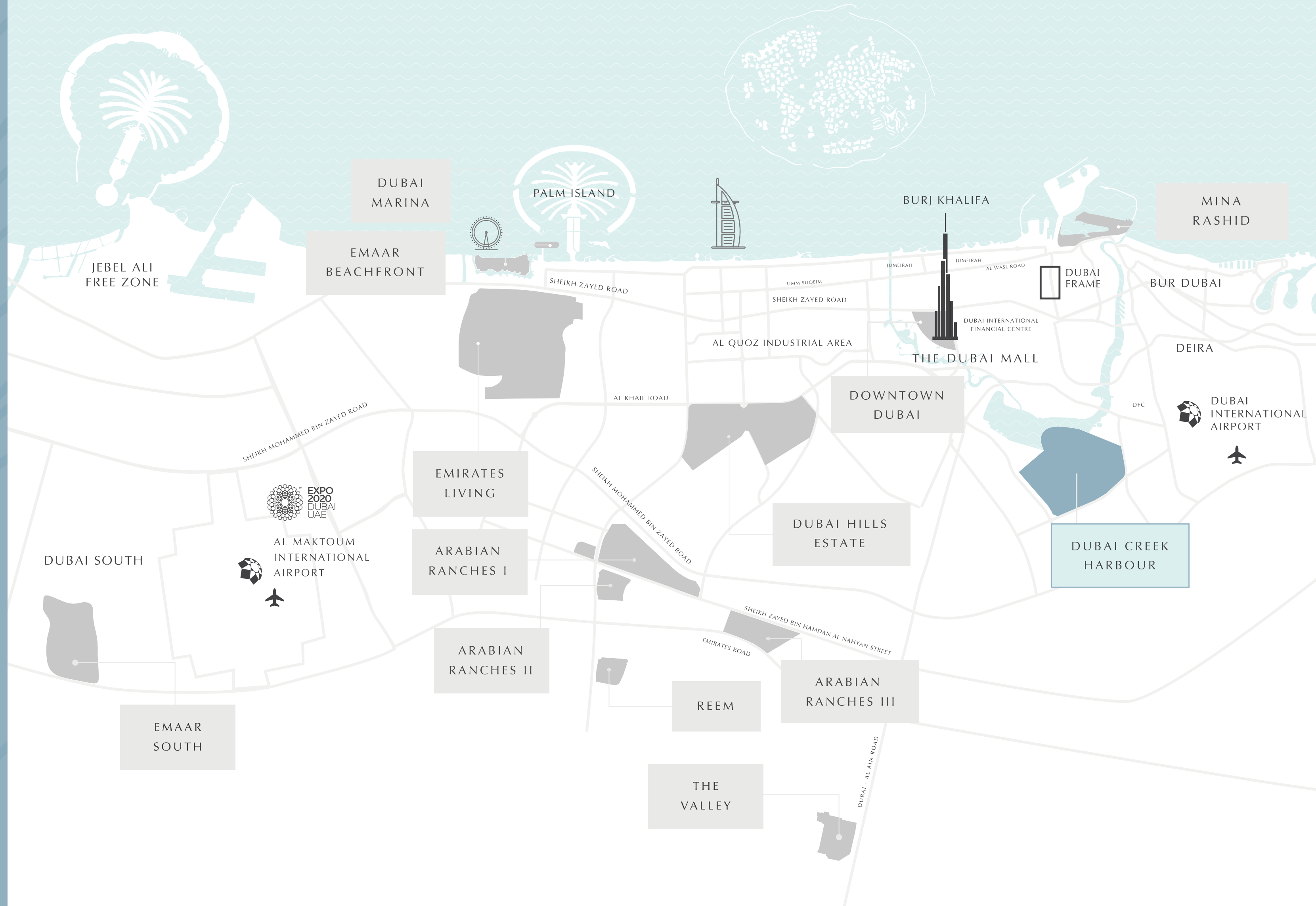
03

Comprising contemporary one, two, three and four-bedroom apartments – homes in Creek Gate boast spectacular views and alluring leisure and recreational facilities.

Step out of Creek Gate's high-rises and discover a flourishing waterfront hotspot, where Dubai's past and future effortlessly intertwine in a fabulous feast for the senses.



# THE IDEAL LOCATION



04



15 MINUTES

drive to Dubai International Airport



10 MINUTES

drive to Downtown Dubai



5 MINUTES

drive to Ras Al Khor Wildlife Sanctuary



# YOUR URBAN ISLAND ADDRESS



05

Creek Gate borders the northern fringe of Dubai Creek Harbour Central Park and is accessible via Creek Island's circular boulevard. The new 5-star, Creek Marina, is just a short, leisurely stroll away. A 10-minute drive will get you to Downtown Dubai and Dubai International Airport is only 15 minutes away.



# A METROPOLITAN HAVEN



06

Creek Gate's lavish high-rises enjoy truly captivating views of the very best of Dubai. The vibrant Dubai Creek Harbour looms outside your window lighting up the night sky, while the lush green park blankets the grounds around you.









08



2 MINUTES  
Walk to Central Park



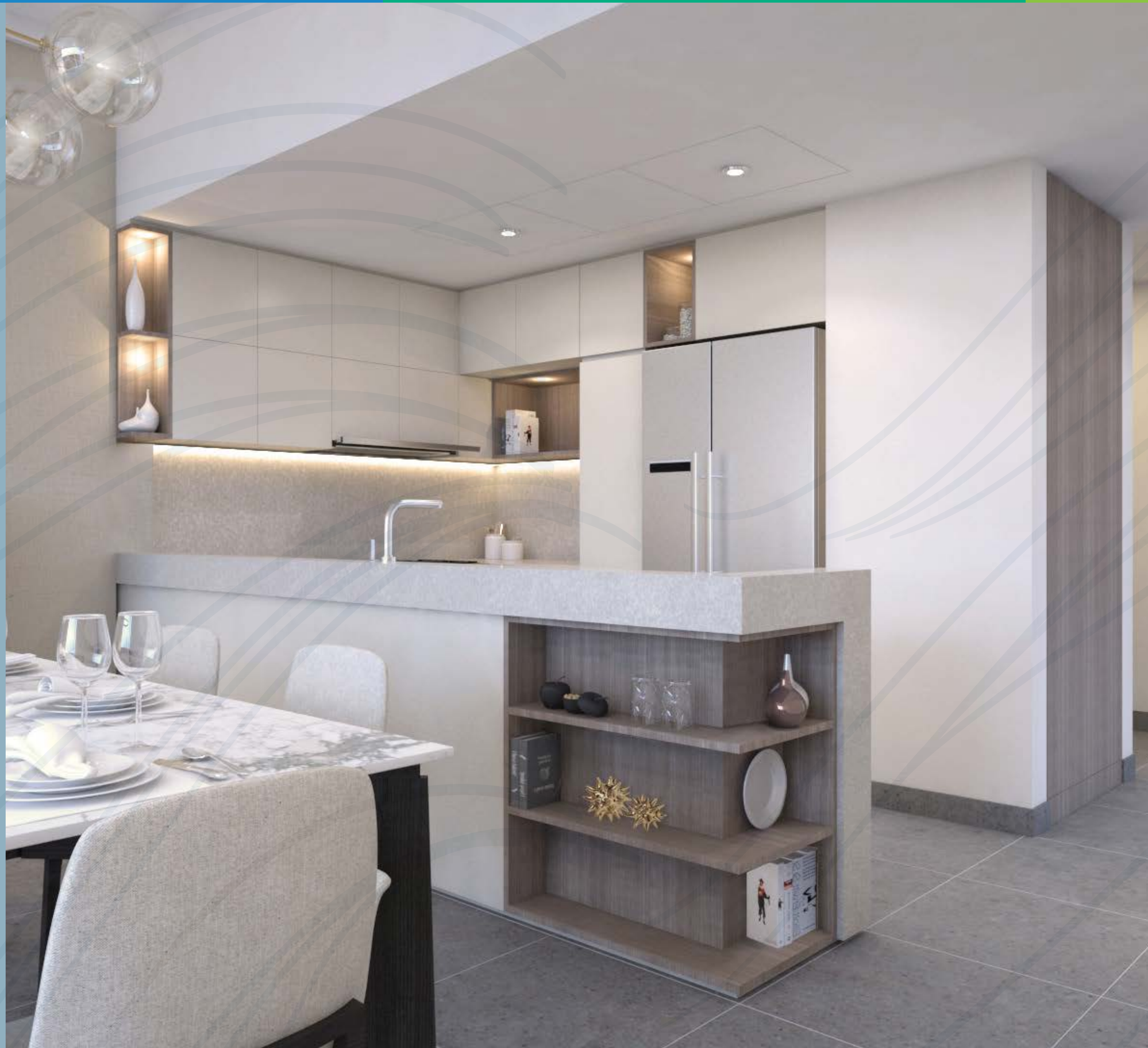
5 MINUTES  
Walk to Creek Marina



5 MINUTES  
Walk to Vida Creek



# YOUR OWN PIECE OF PARADISE



09

Spacious and brightly lit, Creek Gate's contemporary living spaces are exquisitely styled. Step out onto your private balcony and take in the unobstructed vistas of Dubai Creek Harbour and the verdant park.



EXQUISITELY ELEGANT



10

Furnished using sleek wooden designs, polished tile finishes and light earthy tones, these sophisticated homes evoke both warmth and elegance.



# THE LIFE YOU ALWAYS DREAMED OF



11

Unwind and connect with friends and family in the ideal setting and enjoy Creek Gate's amazing array of world-class amenities, including a fully equipped gymnasium, temperature-controlled pool and children's play areas. There's always a reason to explore the surrounding community, with an extensive selection of leisure, entertainment, retail, and cultural options on your doorstep, along with an exceptional assortment of dining destinations.



CENTRAL PARK



A VAST ARRAY OF RETAIL  
OPTIONS



NEARBY RESTAURANTS  
AND CAFES



CHILDREN'S PLAY AREAS



SWIMMING POOL & FULLY EQUIPPED GYM



# CREEK MARINA



1 2

Find the perfect balance between urban life and waterfront tranquility at Creek Marina.



CREEK MARINA  
YACHT CLUB



INTERACTIVE  
ART INSTALLATIONS



NEAR  
CENTRAL PARK



GOURMET  
DINING OPTIONS



WATERFRONT  
PROMENADE



WI-FI  
HOTSPOTS



# CENTRAL PARK



13

Central Park is the focal point of future-ready island living. Surrounded by Creek Island's breath-taking, contemporary, residential buildings – Central Park offers residents a tranquil retreat for relaxation, world-class amenities for enjoyment, and wide-open spaces for boundless recreation.



VERDANT  
OPEN SPACES



AMPHITHEATRE



KIDS' PLAYGROUND  
& GAMES AREA



INTERACTIVE  
WATER FEATURE



PICTURESQUE  
DESERT GARDEN



FITNESS PLAZA  
& SKATE PARK



# WHY INVEST IN DUBAI



14

- 20 MN EXPECTED ANNUAL VISITORS BY 2025
- HOME TO OVER 200 NATIONALITIES
- COMPETITIVE RESIDENTIAL REAL ESTATE PRICES
- OVER 3 MN RESIDENTS
- HOME TO EXPO 2020
- ONE OF THE MOST SECURE CITIES FOR VALUE GAINS THROUGH PROPERTY INVESTMENT



# GLOBAL LIFESTYLE DEVELOPER



15

An undisputed leader in the global real estate market, Emaar has grown over the years to become the largest real estate developer outside of mainland China. You will be investing with one of the most-loved brands in the world.\*

MARKET CAP

AED  
**21BN**  
FY 2020

REVENUE

AED  
**19.7BN**  
FY 2020

NET PROFIT

AED  
**2.6BN**  
FY 2020

RESIDENTIAL UNITS  
DELIVERED

**72,000+**

UNITS UNDER  
CONSTRUCTION

**38,000+**



# CREEK GATE

FOR MORE INFORMATION PLEASE CONTACT



**REAL ESTATE**

STAY AHEAD, INVEST SMART



+971 55 476 7630



+971 4 368 7878



info@afsrealestate.com



www.afsrealestate.com



**DUBRICKS**

POSSIBILITIES ARE LIMITLESS



+971 50 674 2020



+971 4 368 7878



info@dubricks.com



www.dubricks.com

**DUBAI CREEK**  
HARBOUR